

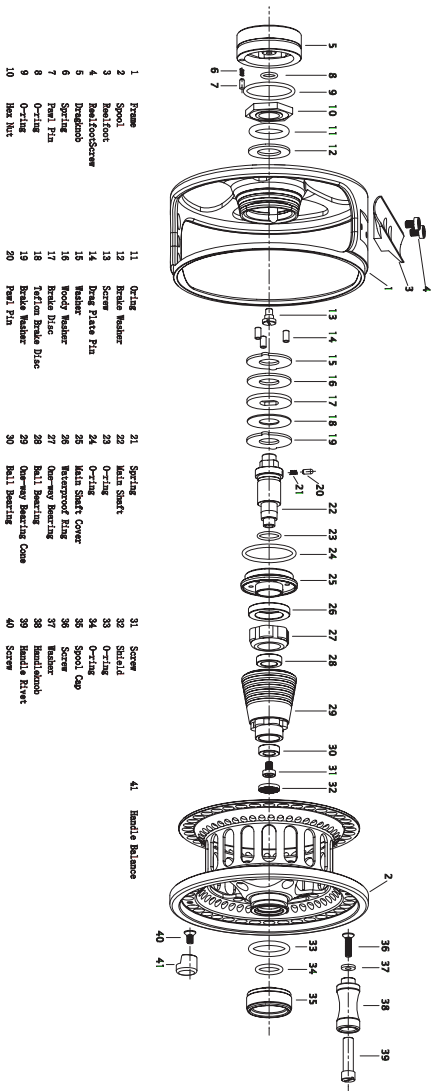
Owners manual

HAZE V2



Parts list
Easy care instructions
Changing direction
of retrieve

GUIDELINE 



- | | | | | | | | |
|----|---------------|----|-------------------|----|------------------------|----|----------------|
| 1 | Prisms | 11 | O-ring | 21 | Spring | 31 | Screw |
| 2 | Spool | 12 | Brake Washer | 22 | Main Shaft | 32 | Shield |
| 3 | Ballfoot | 13 | Screw | 23 | O-ring | 33 | O-ring |
| 4 | BallfootScrew | 14 | Brng Plate Pin | 24 | O-ring | 34 | O-ring |
| 5 | Deadend | 15 | Washer | 25 | Main Shaft Cover | 35 | Spool Cap |
| 6 | Spring | 16 | Washer | 26 | Waterproof Ring | 36 | Screw |
| 7 | Pinl Pin | 17 | Brake Disc | 27 | Over-way Bearing | 37 | Washer |
| 8 | O-ring | 18 | Teflon Brake Disc | 28 | Ball Bearing | 38 | Ball Screw |
| 9 | O-ring | 19 | Brake Washer | 29 | Over-way Bearing Cover | 39 | Handle's Rivet |
| 10 | Hex Nut | 20 | Pinl Pin | 30 | Ball Bearing | 40 | Ball Screw |

41 Handle Balance

Haze V2 Fly reels



Thank you for choosing this carefully designed GUIDELINE flyreel. We are very proud that you decided to choose one of our products among so many others.

We sincerely hope it will bring you years of good performance and many great fish. Please take good care of your reel and try to follow the instructions below to make sure it will perform to your highest expectations in the most demanding conditions.

Always rinse or soak your reel in fresh water after using it. Take the spool off the body, to get best possible access to all areas of the reel. Remove sand and dirt with a soft, wet sponge or cloth. Rinse thoroughly after cleaning, especially if you have used the reel in salt water. Leave the reel to air dry before storing it for your next trip. There is no need to open the sealed drag system for lubrication or adjustments. The inside of this reel is maintenance free. If you want, you can apply a thin layer of grease on the shaft and the locking areas of the spool.

Back off the drag to the lowest setting when the reel isn't used. Store the reel in the protective reel case both when it is on and off the fly rod.

These reels feature a sealed Cork/Teflon/Stainless steel, stacked drag system that is resistant to water, dirt and moisture. There is normally no need to open up the drag cylinder.

However, if you need to change the direction of the retrieve, please follow the steps below.

HAZE V2

HOW TO CHANGE THE DIRECTION OF RETRIEVE

1. Remove spool from reel by unscrewing the release spool knob.
2. Pull the spool off the shaft.
3. Using a small needle or a pair of tweezers, remove the black rubber cover inside the top of the red cone shaped cylinder.
4. Use a small standard screwdriver to remove the locking screw that holds the red part of the cone in place on the main shaft.
5. Now, remove the red cylinder from the main shaft.
6. Use a pair of flat nosed pliers to remove the rubber seal that is attached to the inside of the bottom and protects the one-way-bearing.
7. To change the direction of retrieve, remove the one-way-bearing and flip it around before putting it back.
8. Put the one-way bearing back into the red cylinder. Make sure it is fitted tight inside the cylinder.
9. Push the rubber seal back in the bottom of the red cylinder so it is positioned tightly inside it and holds the one-way-bearing in place.
10. Fit the red cylinder back onto the main shaft and tighten with the screw again. You might need to tighten the drag knob first to get it to lock firmly on the shaft.
11. Place the round rubber seal plate over the screw again.
12. Place the spool back onto the shaft and tighten the spool knob again.

Please log on to our website www.guidelineflyfish.com and go to the page for Haze V2 Reels if you want to watch a film on how to change the direction of retrieve.

THANK YOU FOR CHOOSING A GUIDELINE FLY REEL.

GUIDELINE fly reels come with a 3-year full service warranty against manufacturer's defects in material or workmanship. This guarantee is valid for the first owner only. The warranty is limited to the repair or exchange of the product and does not cover any type of damage caused by neglect, normal wear or misuse.

GUIDELINE 